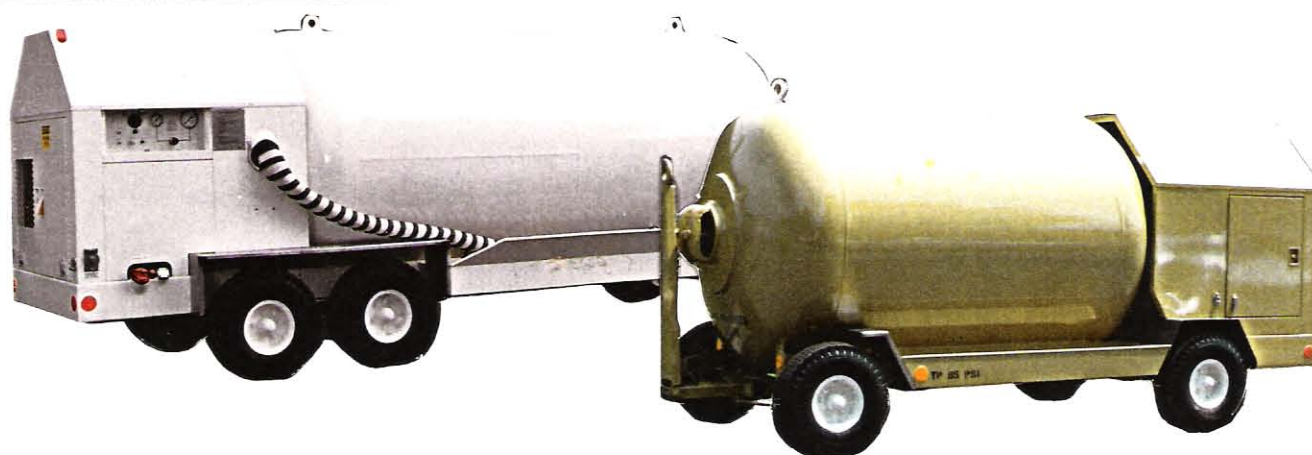




PNEUMATIC JET START EQUIPMENT (STORED AIR SYSTEMS) ACE-500-SERIES



The ACE-500-Series Pneumatic Jet Engine Start Units provide medium pressure air sources for jet aircraft engine starting. Start air pressures are adjustable to 45 psig at 0-300 lbs/min. air flow to start all types of jet aircraft engines. The units are available in a variety of sizes and configurations to meet individual customer requirements - based on aircraft to be serviced and frequency of utilization.

These self-recharging stored-air type units are supplied complete with a properly rated piston-type compressor, ASME cylinder, customer-selected power source and mounting (truck/trailer/stationary pedestal), 30 ft. jet start hose and aircraft coupler. A major component is the ACE-developed "soft-start" regulator control valve, which controls air pressures delivered to the engine in accordance with the engine manufacturer's specifications.

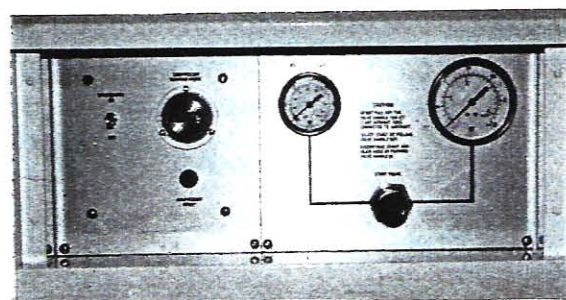
DESIGN FEATURES

- **ACE control valve**, normally-closed, fail-safe design. Signal pressure operated to produce slow opening (soft-start) and fast closing.
- Properly rated and sized **ASME cylinder** and **ASME relief valve**.
- **High flow relief valve** set at required safety pressure to protect aircraft starter supply lines.
- **Industrial two-stage fan-cooled compressor** with interstage cooler, oil lubricated with automatic unloading.
- **Adjustable pressure** for all aircraft engine pressure requirements.
- **Automatic bleeding** of starter hose at finish of each engine start.
- **Heavy-duty construction** - structural steel base, sheet metal enclosure, hinged doors, hose storage area.

- **30 Ft. jet starter hose** - 3 1/2" I.D. silicone type construction with scuff jacket and aircraft coupler.
- **Low profile running gear** for increased stability and maneuverability.
- **Vibration isolation** for all engine driven units to reduce noise and protect all components.
- **Ease of maintenance** - all service points are easily accessible for routine maintenance and/or servicing.
- **Meets or exceeds all airport noise restrictions** when recharging or when starting engines.

OPTIONAL EQUIPMENT

- Engine fuel water separator.
- Illuminated engine instrument panel.
- Self-circulating engine block heater with panel mounted power receptacle.
- Shop air supply kit.
- 380 Volts, 3 phase, 50 Hz operation.
- Fifth wheel steering.



Typical Instrument Panel for ACE-500-Series

PNEUMATIC JET START EQUIPMENT

ACE-500-SERIES

DESIGN SPECIFICATIONS

Electric*		ACE-500-1116	ACE-500-1119	ACE-500-1123
Diesel - Isuzu 3KC1**		ACE-500-1516	ACE-500-1519	ACE-500-1523
Stored Air	Lbs. (Kg)	420 (191)	500 (227)	600 (273)
Usable Air	Lbs. (Kg)	340 (155)	415 (189)	500 (227)
PSIG (Kg/CM ² /G)		500 (35.15)	500 (35.15)	500 (35.15)
Cylinder Size		60 Inch I.D. 500 Lb. Rated ASME Pressure Vessel		
Recharge Rate	Lbs./Min.	2.0	2.0	2.0
Compressor Horsepower		15.0	15.0	15.0
Length	Inches (Cm)	175 (445)	200 (508)	220 (559)
Width	Inches (Cm)	82 (208)	82 (208)	82 (208)
Height	Inches (Cm)	76 (193)	76 (193)	76 (193)
Weight	Lbs. (Kg)	9,760 (4,436)	11,790 (5,359)	13,200 (6,000)

* Electric Motor Driven Units wired for 480V, 3 phase, 60 Hz operation; other options available.

** Other engines available.

AIRCRAFT SELECTION CHART

AIRCRAFT TYPE	ACE-500-1116 ACE-500-1516	ACE-500-1119 ACE-500-1519	ACE-500-1123 ACE-500-1523
Airbus Industries			
A300/A310		X	X
A320/321	X	X	X
British Aerospace			
BAE 146/RJ-70/RJ-85/RJ-100	X	X	X
Boeing			
707/720/727/737	X	X	X
747/757/767/777			X
Canadair			
Regional Jet	X	X	X
McDonnell Douglas			
DC8/DC9/MD80 Series/DC8-70 Series/DC10	X	X	X
MD11			X
MD90	X	X	X
Fokker			
F28/F100	X	X	X
Lockheed			
L-1011		X	X

Equipment is manufactured and warranted by **Accessory Controls & Equipment Corp.**
805 Bloomfield Avenue, Windsor, CT 06095 • Phone: (860) 688-4986 • Fax: (860) 688-7773